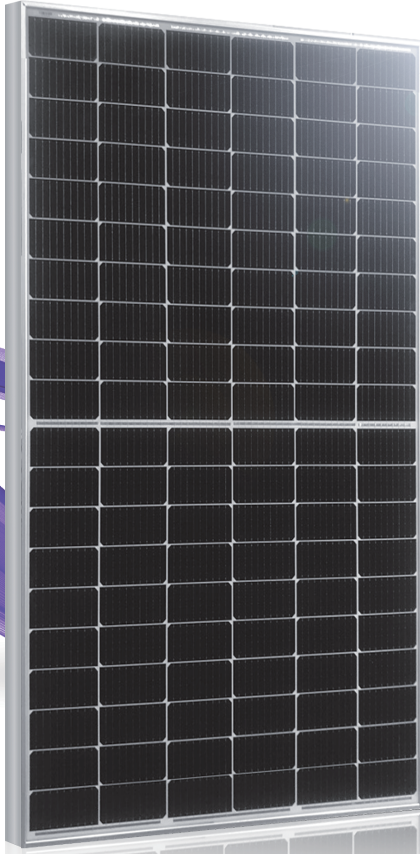




FAK_E7C / 120 cells
350-375 W
Mono-Crystalline PV Module

URE Peach module uses URE state-of-the-art cell cutting technology, and advanced module manufacturing experiences.



Key Features



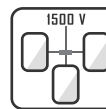
Positive power tolerance
+0 ~ +4.99 watt



100% EL inline inspection
Better module reliability



Withstand heavy loading
front load 5400 Pa & rear load 2400 Pa

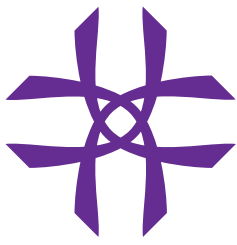


Design for 1500 VDC
Reduce the system BOS effectively



Excellent low light performance
3.5% relative eff. Reduction at low-irradiance (200W/m²)





URE

United Renewable Energy Co., Ltd.

Electrical Data

Model - STC		FAK350E7C	FAK355E7C	FAK360E7C	FAK365E7C	FAK370E7C	FAK375E7C
Maximum Rating Power (Pmax)	[W]	350	355	360	365	370	375
Module Efficiency	[%]	18.74	19.01	19.28	19.55	19.81	20.08
Open Circuit Voltage (Voc)	[V]	40.70	40.90	41.10	41.30	41.50	41.60
Maximum Power Voltage	[V]	33.30	33.50	33.70	33.90	34.10	34.20
Short Circuit Current (Isc)	[A]	10.53	10.61	10.69	10.77	10.86	10.98
Maximum Power Current	[A]	11.33	11.43	11.53	11.63	11.72	11.85

*Standard Test Condition (STC): Cell Temperature 25 °C, Irradiance 1000 W/m², AM 1.5

*Values without tolerance are typical numbers. Measurement tolerance: ±3%

*Assembly: CN

Mechanical Data

Item	Specification
Dimensions	1775mm (L) ¹ x 1052 mm (W) ¹ x 35 mm (D) ² / 69.88" (L) ¹ x 41.41" (W) ¹ x 1.38" (D) ²
Weight	20.5 kg / 45.19 lbs
Solar Cell	120 half-cut monocrystalline 6" silicon cells
Front Glass	High transmission tempered glass
Cell Encapsulation	EVA (Ethylene-Vinyl-Acetate)
Back Cover	Composite film, white
Junction Box	HT003, IP68
Connector type	PVC002, MC4 Compatible
Cable	4.0 mm ² (IEC), Length: 1100mm
Frame	Anodized Aluminum Alloy
Package Configuration	31 pcs Per Pallet, 806 pcs per 40' HQ container

1 : With assembly tolerance of ± 2 mm [± 0.08"]

2 : With assembly tolerance of ± 0.8 mm [± 0.03"]

Operating Conditions

Item	Specification
Mechanical Load	5400 Pa (Certified by TUV)
Maximum System Voltage	TUV 1500 VDC
Series Fuse Rating	15 A
Operating Temperature	-40 to 85 °C

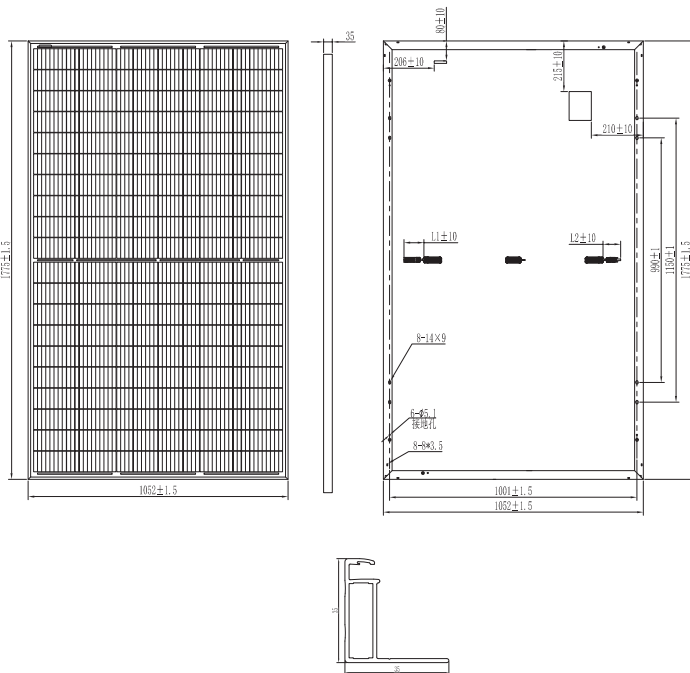
Temperature Characteristics

Item	Specification
Nominal Module Operating Temperature	45 °C ± 2 °C
Temperature Coefficient of Isc	0.049 % / °C
Temperature Coefficient of Voc	-0.29 % / °C
Temperature Coefficient of Pmax	-0.39% / °C

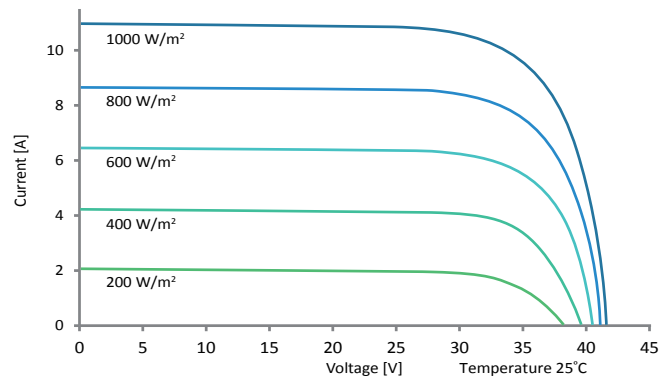
*Nominal module operating temperature (NMOT): Air mass AM 1.5, irradiance 800W/m², temperature 20°C, windspeed 1 m/s.

*Reduction in efficiency from 1000W/m² to 200W/m² at 25°C: 3.5 ± 2%.

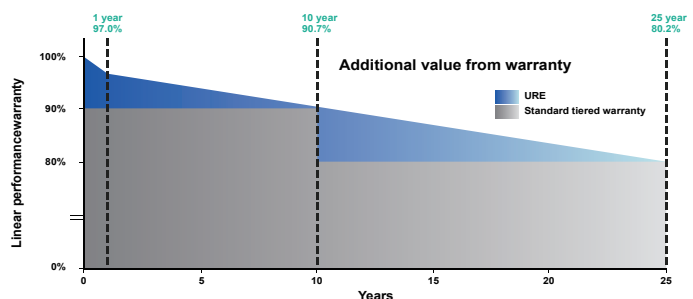
Engineering Drawing (mm)



Dependence on Irradiance



Reliability with Warranty



Output warranty
25
Years

Product Guarantee
12
Years

For more information, please visit us at www.urecorp.com

United Renewable Energy Co., Ltd.

Assemble in China

Copyright © 2020 URE Corp. All rights reserved

Taipei Office

9F, No. 295, Tiding Blvd. Sec. 2
Taipei, Taiwan 11493

Tel : +886-2-2656-2000

Fax : +886-2-2656-0593

e-mail : sales@urecorp.com

Headquarters

No. 7, Li-Hsin 3rd Road, Hsinchu Science Park
Hsinchu city 30078, Taiwan

Tel : +886-3-578-0011

Fax : +886-3-578-1255